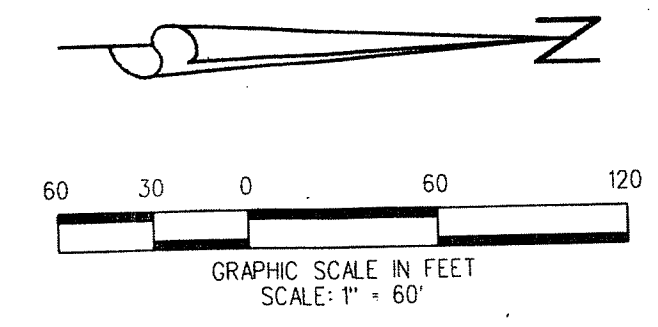


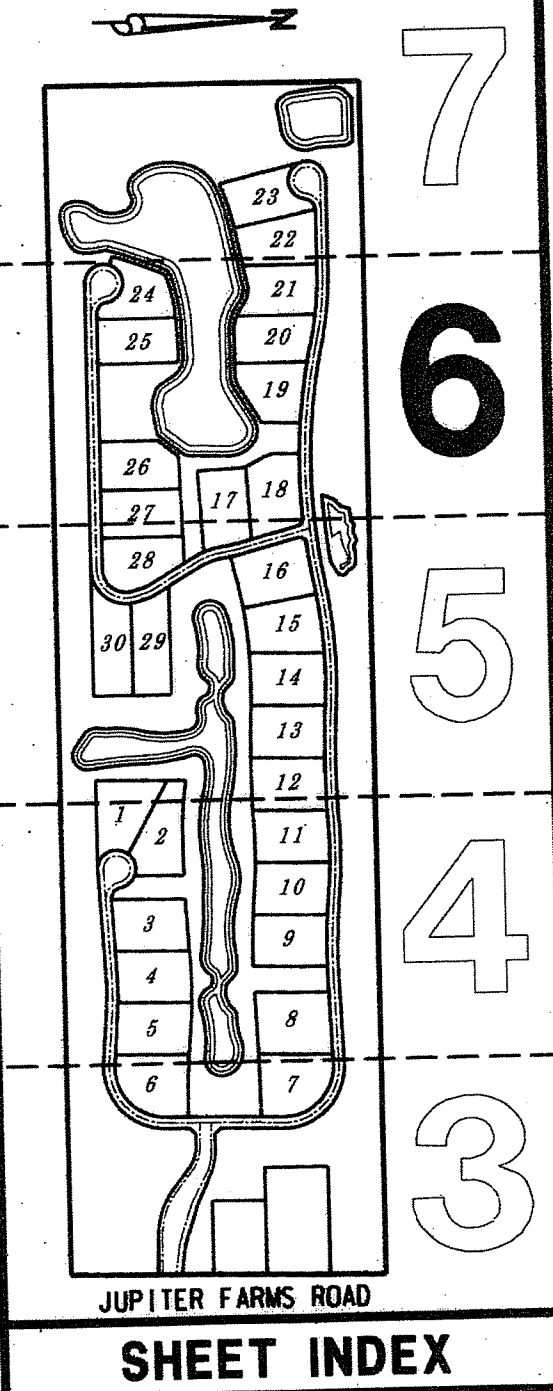
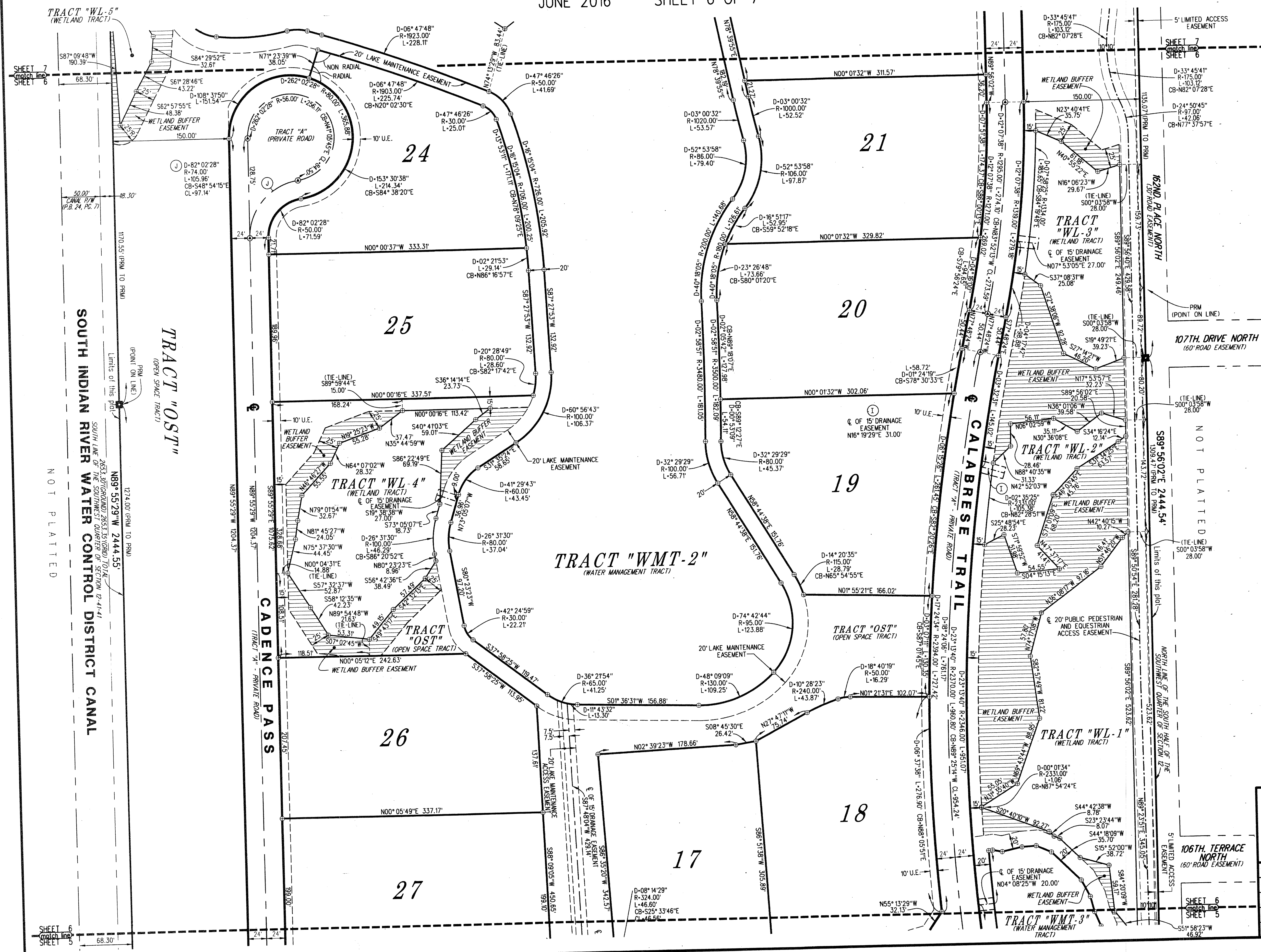
# REYNOLDS RANCH, A P.U.D.

BEING A PORTION OF SECTION 12, TOWNSHIP 41 SOUTH, RANGE 41 EAST,  
PALM BEACH COUNTY, FLORIDA

JUNE 2016 SHEET 6 OF 7



5862-060



### ABBREVIATIONS:

- CB = CHORD BEARING
- CL = CHORD LENGTH
- D = DELTA
- D.E. = DRAINAGE EASEMENT
- L = LENGTH
- L.A.E. = LIMITED ACCESS EASEMENT
- O.R.B. = OFFICIAL RECORD BOOK
- N.E. = NORTHEAST
- N.W. = NORTHWEST
- P.C.P. = PERMANENT CONTROL POINT
- P.B. = PLAT BOOK
- PC. = PAGE
- P.R.M. = PERMANENT REFERENCE MONUMENT
- P.S.M. = PROFESSIONAL SURVEYOR AND MAPPER
- P.U.D. = PLANNED UNIT DEVELOPMENT
- R = RADIUS
- S.E. = SOUTHEAST
- S.S.E. = SAFE SIGHT EASEMENT
- S.W. = SOUTHWEST
- U.E. = UTILITY EASEMENT

### LEGEND:

- = DENOTES PERMANENT REFERENCE MONUMENT (P.R.M.) SET 4"x4" CONCRETE MONUMENT WITH DISK STAMPED "PRM LB4431" UNLESS OTHERWISE NOTED
- ⊙ = DENOTES PERMANENT CONTROL POINT (P.C.P.) SET MAG NAIL & DISK STAMPED "PCP LB4431" UNLESS OTHERWISE NOTED
- ⊕ = DENOTES CENTERLINE OF RIGHT OF WAY
- ⊙ = DENOTES TRACT OR LOT CORNER
- ▨ = DENOTES LIMITS OF WETLAND BUFFER

**LIDBERG LAND SURVEYING, INC.**  
 LB4431 675 West Indiantown Road, Suite 200, Jupiter, Florida 33458 TEL. 561-746-8454

CAD:	K\JUST \124141\ 13-045 \ 13-045A-306 \ 13-045A-306.DGN				
REF.					
F.L.D.	J.P.	F.B.	PG.	JOB	13-045A-306
OFF.	CASASUS			DATE	JUNE 2016
CKD.	D.C.L.	SHEET	6 OF 7	DWG.	D13-045P

SOUTH INDIAN RIVER WATER CONTROL DISTRICT CANAL  
NOT PLATTED

TRACT "OST"  
(OPEN SPACE TRACT)

CADENCE PASS  
(TRACT "A" - PRIVATE ROAD)

CALABRESE TRAIL  
(TRACT "A" - PRIVATE ROAD)

162ND PLACE NORTH  
(100' ROAD EASEMENT)

107TH DRIVE NORTH  
(60' ROAD EASEMENT)

NOT PLATTED

NORTH LINE OF THE SOUTH HALF OF THE  
SOUTHWEST QUARTER OF SECTION 12

106TH TERRACE  
NORTH  
(60' ROAD EASEMENT)

SHEET 6  
MATCH LINE  
SHEET 5

SHEET 6  
MATCH LINE  
SHEET 5